

School Board Awaits Recommendations in Minasian Controversy

Superintendent of Schools Evan Thomas Will Advise Board in Considering Proper Action To Be Taken in Calabro Case

The Minasian vs. Calabro case was dumped back into the lap of Superintendent of Schools Evan Thomas by the Board of Education at Monday night's conference.

After a lengthy discussion on the matter, it was decided to wait for recommendations from Thomas as to what would be the most advisable procedure in order to be fair to all concerned.

Complaints against Minasian in addition to those brought up by Calabro were aired at the public meeting of the Board.

Following the conference in a statement made by Mrs. Henry Allen, of 40 Walnut Street, Mrs. Allen, who is the school principal had "publicly embarrassed" her because she did not come to the school while she was acting as a member of the Board of Education Redistricting Committee.

When confronted with the complaints, Minasian denied ever publicly embarrassing Mrs. Allen, and also said that he had never threatened the president of the PTA. He also said he knew of no medical report like that mentioned in the Carlson matter.

In a statement concerning the Calabro case Minasian defended the pupil involved, stating that a school principal must live up to the rules he has laid forth in order to maintain proper discipline. He termed a statement made two weeks ago by Martin Benick on behalf of the Citizens Tax Council and the Citizens Park Drive Association a "lack of faith."

Superintendent Thomas remarked that other complaints have come to him from parents in connection with actions on the part of Minasian, but indicated that four of the complaints against the principal presented them from the Minasian family.

In place of the present alleged five-member commission appointed by the governor, the bill would provide for a board consisting of one member from each of the 22 municipalities. Each member would be appointed by and serve the pleasure of his community.

The board members, while non-salaried, could be compensated for attendance at meetings and for expenses incurred in the performance of their duties.

The legislation proposed by Carlson features a strong conflict-of-interest clause which states: "No commissioner shall be directly or indirectly interested in any contract awarded, nor in furnishing materials or supplies therefor to any contractor, nor in furnishing security for the performance of any contract."

The teacher's salary guide for the school year 1959-60 was approved at Monday's Board of Education meeting.

However, no action was taken on salary ratios for the Superintendent of Schools, general supervisor, assistant superintendent, high school principal, full-time director, principal, special elementary principals, special elementary teachers and part-time directors.

The teacher's guide provides minimum salaries of \$4,200, \$4,400, \$4,600, \$4,800, \$5,000, \$5,200, \$5,400, \$5,600, \$5,800, \$6,000, \$6,200, \$6,400, \$6,600, \$6,800, \$7,000, \$7,200, \$7,400, \$7,600, \$7,800, \$8,000, \$8,200, \$8,400, \$8,600, \$8,800, \$9,000, \$9,200, \$9,400, \$9,600, \$9,800, \$10,000, \$10,200, \$10,400, \$10,600, \$10,800, \$11,000, \$11,200, \$11,400, \$11,600, \$11,800, \$12,000, \$12,200, \$12,400, \$12,600, \$12,800, \$13,000, \$13,200, \$13,400, \$13,600, \$13,800, \$14,000, \$14,200, \$14,400, \$14,600, \$14,800, \$15,000, \$15,200, \$15,400, \$15,600, \$15,800, \$16,000, \$16,200, \$16,400, \$16,600, \$16,800, \$17,000, \$17,200, \$17,400, \$17,600, \$17,800, \$18,000, \$18,200, \$18,400, \$18,600, \$18,800, \$19,000, \$19,200, \$19,400, \$19,600, \$19,800, \$20,000, \$20,200, \$20,400, \$20,600, \$20,800, \$21,000, \$21,200, \$21,400, \$21,600, \$21,800, \$22,000, \$22,200, \$22,400, \$22,600, \$22,800, \$23,000, \$23,200, \$23,400, \$23,600, \$23,800, \$24,000, \$24,200, \$24,400, \$24,600, \$24,800, \$25,000, \$25,200, \$25,400, \$25,600, \$25,800, \$26,000, \$26,200, \$26,400, \$26,600, \$26,800, \$27,000, \$27,200, \$27,400, \$27,600, \$27,800, \$28,000, \$28,200, \$28,400, \$28,600, \$28,800, \$29,000, \$29,200, \$29,400, \$29,600, \$29,800, \$30,000, \$30,200, \$30,400, \$30,600, \$30,800, \$31,000, \$31,200, \$31,400, \$31,600, \$31,800, \$32,000, \$32,200, \$32,400, \$32,600, \$32,800, \$33,000, \$33,200, \$33,400, \$33,600, \$33,800, \$34,000, \$34,200, \$34,400, \$34,600, \$34,800, \$35,000, \$35,200, \$35,400, \$35,600, \$35,800, \$36,000, \$36,200, \$36,400, \$36,600, \$36,800, \$37,000, \$37,200, \$37,400, \$37,600, \$37,800, \$38,000, \$38,200, \$38,400, \$38,600, \$38,800, \$39,000, \$39,200, \$39,400, \$39,600, \$39,800, \$40,000, \$40,200, \$40,400, \$40,600, \$40,800, \$41,000, \$41,200, \$41,400, \$41,600, \$41,800, \$42,000, \$42,200, \$42,400, \$42,600, \$42,800, \$43,000, \$43,200, \$43,400, \$43,600, \$43,800, \$44,000, \$44,200, \$44,400, \$44,600, \$44,800, \$45,000, \$45,200, \$45,400, \$45,600, \$45,800, \$46,000, \$46,200, \$46,400, \$46,600, \$46,800, \$47,000, \$47,200, \$47,400, \$47,600, \$47,800, \$48,000, \$48,200, \$48,400, \$48,600, \$48,800, \$49,000, \$49,200, \$49,400, \$49,600, \$49,800, \$50,000, \$50,200, \$50,400, \$50,600, \$50,800, \$51,000, \$51,200, \$51,400, \$51,600, \$51,800, \$52,000, \$52,200, \$52,400, \$52,600, \$52,800, \$53,000, \$53,200, \$53,400, \$53,600, \$53,800, \$54,000, \$54,200, \$54,400, \$54,600, \$54,800, \$55,000, \$55,200, \$55,400, \$55,600, \$55,800, \$56,000, \$56,200, \$56,400, \$56,600, \$56,800, \$57,000, \$57,200, \$57,400, \$57,600, \$57,800, \$58,000, \$58,200, \$58,400, \$58,600, \$58,800, \$59,000, \$59,200, \$59,400, \$59,600, \$59,800, \$60,000, \$60,200, \$60,400, \$60,600, \$60,800, \$61,000, \$61,200, \$61,400, \$61,600, \$61,800, \$62,000, \$62,200, \$62,400, \$62,600, \$62,800, \$63,000, \$63,200, \$63,400, \$63,600, \$63,800, \$64,000, \$64,200, \$64,400, \$64,600, \$64,800, \$65,000, \$65,200, \$65,400, \$65,600, \$65,800, \$66,000, \$66,200, \$66,400, \$66,600, \$66,800, \$67,000, \$67,200, \$67,400, \$67,600, \$67,800, \$68,000, \$68,200, \$68,400, \$68,600, \$68,800, \$69,000, \$69,200, \$69,400, \$69,600, \$69,800, \$70,000, \$70,200, \$70,400, \$70,600, \$70,800, \$71,000, \$71,200, \$71,400, \$71,600, \$71,800, \$72,000, \$72,200, \$72,400, \$72,600, \$72,800, \$73,000, \$73,200, \$73,400, \$73,600, \$73,800, \$74,000, \$74,200, \$74,400, \$74,600, \$74,800, \$75,000, \$75,200, \$75,400, \$75,600, \$75,800, \$76,000, \$76,200, \$76,400, \$76,600, \$76,800, \$77,000, \$77,200, \$77,400, \$77,600, \$77,800, \$78,000, \$78,200, \$78,400, \$78,600, \$78,800, \$79,000, \$79,200, \$79,400, \$79,600, \$79,800, \$80,000, \$80,200, \$80,400, \$80,600, \$80,800, \$81,000, \$81,200, \$81,400, \$81,600, \$81,800, \$82,000, \$82,200, \$82,400, \$82,600, \$82,800, \$83,000, \$83,200, \$83,400, \$83,600, \$83,800, \$84,000, \$84,200, \$84,400, \$84,600, \$84,800, \$85,000, \$85,200, \$85,400, \$85,600, \$85,800, \$86,000, \$86,200, \$86,400, \$86,600, \$86,800, \$87,000, \$87,200, \$87,400, \$87,600, \$87,800, \$88,000, \$88,200, \$88,400, \$88,600, \$88,800, \$89,000, \$89,200, \$89,400, \$89,600, \$89,800, \$90,000, \$90,200, \$90,400, \$90,600, \$90,800, \$91,000, \$91,200, \$91,400, \$91,600, \$91,800, \$92,000, \$92,200, \$92,400, \$92,600, \$92,800, \$93,000, \$93,200, \$93,400, \$93,600, \$93,800, \$94,000, \$94,200, \$94,400, \$94,600, \$94,800, \$95,000, \$95,200, \$95,400, \$95,600, \$95,800, \$96,000, \$96,200, \$96,400, \$96,600, \$96,800, \$97,000, \$97,200, \$97,400, \$97,600, \$97,800, \$98,000, \$98,200, \$98,400, \$98,600, \$98,800, \$99,000, \$99,200, \$99,400, \$99,600, \$99,800, \$100,000, \$100,200, \$100,400, \$100,600, \$100,800, \$101,000, \$101,200, \$101,400, \$101,600, \$101,800, \$102,000, \$102,200, \$102,400, \$102,600, \$102,800, \$103,000, \$103,200, \$103,400, \$103,600, \$103,800, \$104,000, \$104,200, \$104,400, \$104,600, \$104,800, \$105,000, \$105,200, \$105,400, \$105,600, \$105,800, \$106,000, \$106,200, \$106,400, \$106,600, \$106,800, \$107,000, \$107,200, \$107,400, \$107,600, \$107,800, \$108,000, \$108,200, \$108,400, \$108,600, \$108,800, \$109,000, \$109,200, \$109,400, \$109,600, \$109,800, \$110,000, \$110,200, \$110,400, \$110,600, \$110,800, \$111,000, \$111,200, \$111,400, \$111,600, \$111,800, \$112,000, \$112,200, \$112,400, \$112,600, \$112,800, \$113,000, \$113,200, \$113,400, \$113,600, \$113,800, \$114,000, \$114,200, \$114,400, \$114,600, \$114,800, \$115,000, \$115,200, \$115,400, \$115,600, \$115,800, \$116,000, \$116,200, \$116,400, \$116,600, \$116,800, \$117,000, \$117,200, \$117,400, \$117,600, \$117,800, \$118,000, \$118,200, \$118,400, \$118,600, \$118,800, \$119,000, \$119,200, \$119,400, \$119,600, \$119,800, \$120,000, \$120,200, \$120,400, \$120,600, \$120,800, \$121,000, \$121,200, \$121,400, \$121,600, \$121,800, \$122,000, \$122,200, \$122,400, \$122,600, \$122,800, \$123,000, \$123,200, \$123,400, \$123,600, \$123,800, \$124,000, \$124,200, \$124,400, \$124,600, \$124,800, \$125,000, \$125,200, \$125,400, \$125,600, \$125,800, \$126,000, \$126,200, \$126,400, \$126,600, \$126,800, \$127,000, \$127,200, \$127,400, \$127,600, \$127,800, \$128,000, \$128,200, \$128,400, \$128,600, \$128,800, \$129,000, \$129,200, \$129,400, \$129,600, \$129,800, \$130,000, \$130,200, \$130,400, \$130,600, \$130,800, \$131,000, \$131,200, \$131,400, \$131,600, \$131,800, \$132,000, \$132,200, \$132,400, \$132,600, \$132,800, \$133,000, \$133,200, \$133,400, \$133,600, \$133,800, \$134,000, \$134,200, \$134,400, \$134,600, \$134,800, \$135,000, \$135,200, \$135,400, \$135,600, \$135,800, \$136,000, \$136,200, \$136,400, \$136,600, \$136,800, \$137,000, \$137,200, \$137,400, \$137,600, \$137,800, \$138,000, \$138,200, \$138,400, \$138,600, \$138,800, \$139,000, \$139,200, \$139,400, \$139,600, \$139,800, \$140,000, \$140,200, \$140,400, \$140,600, \$140,800, \$141,000, \$141,200, \$141,400, \$141,600, \$141,800, \$142,000, \$142,200, \$142,400, \$142,600, \$142,800, \$143,000, \$143,200, \$143,400, \$143,600, \$143,800, \$144,000, \$144,200, \$144,400, \$144,600, \$144,800, \$145,000, \$145,200, \$145,400, \$145,600, \$145,800, \$146,000, \$146,200, \$146,400, \$146,600, \$146,800, \$147,000, \$147,200, \$147,400, \$147,600, \$147,800, \$148,000, \$148,200, \$148,400, \$148,600, \$148,800, \$149,000, \$149,200, \$149,400, \$149,600, \$149,800, \$150,000, \$150,200, \$150,400, \$150,600, \$150,800, \$151,000, \$151,200, \$151,400, \$151,600, \$151,800, \$152,000, \$152,200, \$152,400, \$152,600, \$152,800, \$153,000, \$153,200, \$153,400, \$153,600, \$153,800, \$154,000, \$154,200, \$154,400, \$154,600, \$154,800, \$155,000, \$155,200, \$155,400, \$155,600, \$155,800, \$156,000, \$156,200, \$156,400, \$156,600, \$156,800, \$157,000, \$157,200, \$157,400, \$157,600, \$157,800, \$158,000, \$158,200, \$158,400, \$158,600, \$158,800, \$159,000, \$159,200, \$159,400, \$159,600, \$159,800, \$160,000, \$160,200, \$160,400, \$160,600, \$160,800, \$161,000, \$161,200, \$161,400, \$161,600, \$161,800, \$162,000, \$162,200, \$162,400, \$162,600, \$162,800, \$163,000, \$163,200, \$163,400, \$163,600, \$163,800, \$164,000, \$164,200, \$164,400, \$164,600, \$164,800, \$165,000, \$165,200, \$165,400, \$165,600, \$165,800, \$166,000, \$166,200, \$166,400, \$166,600, \$166,800, \$167,000, \$167,200, \$167,400, \$167,600, \$167,800, \$168,000, \$168,200, \$168,400, \$168,600, \$168,800, \$169,000, \$169,200, \$169,400, \$169,600, \$169,800, \$170,000, \$170,200, \$170,400, \$170,600, \$170,800, \$171,000, \$171,200, \$171,400, \$171,600, \$171,800, \$172,000, \$172,200, \$172,400, \$172,600, \$172,800, \$173,000, \$173,200, \$173,400, \$173,600, \$173,800, \$174,000, \$174,200, \$174,400, \$174,600, \$174,800, \$175,000, \$175,200, \$175,400, \$175,600, \$175,800, \$176,000, \$176,200, \$176,400, \$176,600, \$176,800, \$177,000, \$177,200, \$177,400, \$177,600, \$177,800, \$178,000, \$178,200, \$178,400, \$178,600, \$178,800, \$179,000, \$179,200, \$179,400, \$179,600, \$179,800, \$180,000, \$180,200, \$180,400, \$180,600, \$180,800, \$181,000, \$181,200, \$181,400, \$181,600, \$181,800, \$182,000, \$182,200, \$182,400, \$182,600, \$182,800, \$183,000, \$183,200, \$183,400, \$183,600, \$183,800, \$184,000, \$184,200, \$184,400, \$184,600, \$184,800, \$185,000, \$185,200, \$185,400, \$185,600, \$185,800, \$186,000, \$186,200, \$186,400, \$186,600, \$186,800, \$187,000, \$187,200, \$187,400, \$187,600, \$187,800, \$188,000, \$188,200, \$188,400, \$188,600, \$188,800, \$189,000, \$189,200, \$189,400, \$189,600, \$189,800, \$190,000, \$190,200, \$190,400, \$190,600, \$190,800, \$191,000, \$191,200, \$191,400, \$191,600, \$191,800, \$192,000, \$192,200, \$192,400, \$192,600, \$192,800, \$193,000, \$193,200, \$193,400, \$193,600, \$193,800, \$194,000, \$194,200, \$194,400, \$194,600, \$194,800, \$195,000, \$195,200, \$195,400, \$195,600, \$195,800, \$196,000, \$196,200, \$196,400, \$196,600, \$196,800, \$197,000, \$197,200, \$197,400, \$197,600, \$197,800, \$198,000, \$198,200, \$198,400, \$198,600, \$198,800, \$199,000, \$199,200, \$199,400, \$199,600, \$199,800, \$200,000, \$200,200, \$200,400, \$200,600, \$200,800, \$201,000, \$201,200, \$201,400, \$201,600, \$201,800, \$202,000, \$202,200, \$202,400, \$202,600, \$202,800, \$203,000, \$203,200, \$203,400, \$203,600, \$203,800, \$204,000, \$204,200, \$204,400, \$204,600, \$204,800, \$205,000, \$205,200, \$205,400, \$205,600, \$205,800, \$206,000, \$206,200, \$206,400, \$206,600, \$206,800, \$207,000, \$207,200, \$207,400, \$207,600, \$207,800, \$208,000, \$208,200, \$208,400, \$208,600, \$208,800, \$209,000, \$209,200, \$209,400, \$209,600, \$209,800, \$210,000, \$210,200, \$210,400, \$210,600, \$210,800, \$211,000, \$211,200, \$211,400, \$211,600, \$211,800, \$212,000, \$212,200, \$212,400, \$212,600, \$212,800, \$213,000, \$213,200, \$213,400, \$213,600, \$213,800, \$214,000, \$214,200, \$214,400, \$214,600, \$214,800, \$215,000, \$215,200, \$215,400, \$215,600, \$215,800, \$216,000, \$216,200, \$216,400, \$216,600, \$216,800, \$217,000, \$217,200, \$217,400, \$217,600, \$217,800, \$218,000, \$218,200, \$218,400, \$218,600, \$218,800, \$219,000, \$219,200, \$219,400, \$219,600, \$219,800, \$220,000, \$220,200, \$220,400, \$220,600, \$220,800, \$221,000, \$221,200, \$221,400, \$221,600, \$221,800, \$222,000, \$222,200, \$222,400, \$222,600, \$222,800, \$223,000, \$223,200, \$223,400, \$223,600, \$223,800, \$224,000, \$224,200, \$224,400, \$224,600, \$224,800, \$225,000, \$225,200, \$225,400, \$225,600, \$225,800, \$226,000, \$226,200, \$226,400, \$226,600, \$226,800, \$227,000, \$227,200, \$227,400, \$227,600, \$227,800, \$228,000, \$228,200, \$228,400, \$228,600, \$228,800, \$229,000, \$229,200, \$229,400, \$229,600, \$229,800, \$230,000, \$230,200, \$230,400, \$230,600, \$230,800, \$231,000, \$231,200, \$231,400, \$231,600, \$231,800, \$232,000, \$232,200, \$232,400, \$232,600, \$232,800, \$233,000, \$233,200, \$233,400, \$233,600, \$233,800, \$234,000, \$234,200, \$234,400, \$234,600, \$234,800, \$235,000, \$235,200, \$235,400, \$235,600, \$235,800, \$236,000, \$236,200, \$236,400, \$236,600, \$236,800, \$237,000, \$237,200, \$237,400, \$237,600, \$237,800, \$238,000, \$238,200, \$238,400, \$238,600, \$238,800, \$239,000, \$239,200, \$239,400, \$239,600, \$239,800, \$240,000, \$240,200, \$240,400, \$240,600, \$240,800, \$241,000, \$241,200, \$241,400, \$241,600, \$241,800, \$242,000, \$242,200, \$242,400, \$242,600, \$242,800, \$243,000, \$243,200, \$243,400, \$243,600, \$243,800, \$244,000, \$244,200, \$244,400, \$244,600, \$244,800, \$245,000, \$245,200, \$245,400, \$245,600, \$245,800, \$246,000, \$246,200, \$246,400, \$246,600, \$246,800, \$247,000, \$247,200, \$247,400, \$247,600, \$247,800, \$248,000, \$248,200, \$248,400, \$248,600, \$248,800, \$249,000, \$249,200, \$249,400, \$249,600, \$249,800, \$250,000, \$250,200, \$250,400, \$250,600, \$250,800, \$251,000, \$251,200, \$251,400, \$251,600, \$251,800, \$252,000, \$252,200, \$252,400, \$252,600, \$252,800, \$253,000, \$253,200, \$253,400, \$253,600, \$253,800, \$254,000, \$254,200, \$254,400, \$254,600, \$254,800, \$255,000, \$255,200, \$255,400, \$255,600, \$255,800, \$256,000, \$256,200, \$256,400, \$256,600, \$256,800, \$257,000, \$257,200, \$257,400, \$257,600, \$257,800, \$258,000, \$258,200, \$258,400, \$258,600, \$258,800, \$259,000, \$259,200, \$259,400, \$259,600, \$259,800, \$260,000, \$260,200, \$260,400, \$260,600, \$260,800, \$261,000, \$261,200, \$261,400, \$261,600, \$261,800, \$262,000, \$262,200, \$262,400, \$262,600, \$262,800, \$263,000, \$263,200, \$263,400, \$263,600, \$263,800, \$264,000, \$264,200, \$264,400, \$264,600, \$264,800, \$265,000, \$265,

Self-Employed Advised To Report Earnings For S. S.

People who work for themselves in a business, trade or profession are reminded by William J. Wilkie, District Manager of the Newark Social Security Office, to report their earnings for social security purposes with their income tax returns. For most business people this return is due on or before April 15, and the social security tax for 1958 is 3-3.8 percent of the first \$4,200 of net earnings.

Since Federal income tax returns are used not only for reporting the amount of income for income tax purposes but also for reporting self-employment income for social security credits, it is necessary that a complete accurate Schedule C be filed with the income tax Form 1040. If net income from a trade or business was \$400 or more, social security taxes must be paid on these net earnings. This is compulsory even though no income tax is due. Self-employed persons sometimes overlook their responsibilities for paying social security taxes because they have enjoyed exemptions so that they don't owe any income tax.

Wilkie concluded with the reminder that maintaining complete and accurate records is good business from many standpoints, and these records are particularly valuable when income tax time rolls around. In preparing the business Schedule C, it is important that only operating profit from the business be included in income and that all allowable expenses be listed. So a complete and accurate income tax return filed on or before April 15th will serve a dual purpose. It will satisfy the Internal Revenue filing requirement and will guarantee proper earnings credits to your social security account.

Full information may be secured at your local social security office. The four Essex County offices are located at 1016 Broad Street, Newark; 2 Broad Street, Bloomfield; 420 Main Street, East Orange; and 1040 Springfield Avenue, Irvington.

EYES EXAMINED

DR. J. G. ANDERTEN

Optometrist

Office hours Monday to Saturday 2 to 5 p.m. in the evening. Closed Wednesday. By appointment.

94 Rossmore Place, Belleville.
Telephone Plymouth 9-1685.

WHITE OAKS HARDWARE

75 UNION AVENUE NORTH 1-1040

Cut This Ad Out And ... SAVE!

SPRING SPECIAL

COOLING SYSTEM

- Flush cooling system
- Tighten hose connections
- Replace necessary hose
- Check water pump
- Adjust fan belt
- Examine for proper thermostat
- Install rust inhibitor in radiator

MOTOR TUNE-UP

- Clean & adjust spark plugs
- Clean & adjust distributor points
- Set ignition timing
- Adjust carburetor
- Tighten cylinder head
- Tighten electrical connections
- Clean air filters
- Check generator charging

LUBRICATION

- Lubricate entire chassis
- Change oil to proper grade Pennzoil (Z-7)
- Test & fill battery
- Clean battery terminals
- Check & fill transmission
- Lubricate hinges
- Lubricate door locks

SAFETY CHECK

- Examine front wheel bearings
- Examine brake linings & report
- Adjust brakes
- Adjust steering gear
- Check lights-Ain lights-Check wipers
- Check horn-Check Tires

\$18.95 Labor Only With This Ad.

\$15.95 6 Cyl. Labor Only With This Ad.

See Otto M. Sgobbo - Service Manager

LEARNARD CHEVROLET

514 WASHINGTON AVENUE
BELLEVILLE, N. J. - PL 9-4200

Tubeless Tire Headquarters - See us for all your needs. All Parts & Lubricants are extra



Heading the Clara Maass Memorial Hospital School of Nursing campaign to raise \$750,000 are these three businessmen who will seek corporate gifts. Pictured left to right, are: George Cafone, Frank J. Church, team captain, and Maurice E. Kausven.

COME TO OUR BIG AUTO SHOWDOWN

We'll take on any car in town!
Feature for Feature... Dollar for Dollar

'59 MERCURY

vs. ANY CAR YOU NAME

Come in! Get the facts — and nothing but the facts!

AT YOUR MERCURY DEALER'S NOW

You don't have to ask the man in a '59 Mercury — he'll tell you "It's the guarantee!"

DAA



PEACE COSTS MONEY

Strengthen America's Peace Power... buy U. S. Savings Bonds

She needs you! Needs you to help keep her world peaceful. But peace costs money. Money for strength to keep the peace. Money for knowledge to make it lasting. Your Savings Bond, as a direct investment in your country, make you a Partner in strengthening America's Peace Power. Buy a few extra!

The U. S. Government does not pay for this advertising. The Treasury Department thanks for their patriotic donation, the Advertising Council and

BENUCCI REMAINS WITH RODINO

Resigns From Newark Police To Continue As Secretary To Congressman

Joseph Benucci, political secretary to Congressman Peter W. Rodino, Jr., since 1954, resigned this week from the Newark Police Department to continue as the 10th District Congressman's aide and head of his office in Newark. He had been on a succession of leaves from his police duty.

In his letter of resignation to Joseph Weiden, Director of Police, Benucci explained, as follows, the reason for his action:

"In my position, upon the instruction of the Congressman, I am in daily contact with our constituents, lending every assistance possible in an effort to resolve their diverse difficulties.

"This is a challenging task, which I thoroughly enjoy. I have found in Congressman Rodino a dedicated man whose tremendous capacity, ability and understanding has made my work pleasant and morally rewarding."

FRANKLIN

NUTLEY 2-1007

Now Playing! 1 Week

Wonderful Inspiring Story Of Love And Devotion

INGRID BERGMAN
CURT JURGENS
ROBERT DONAT

THE INN OF THE SIXTH HAPPINESS

CINEMASCOPE COLOR BY DE LUXE

Big Sat. Matinee!
2 Brand - New Hits!
2 Science-Fiction Thrills!

"War Of The Satellites"
"50 Ft Woman Attacks"

Also 3 Cartoons!
Show Starts At 1:30

Starts Friday - April 10
"Separate Tables"

Sewerage Commission

Any member violating the provision would be removed by the governing body of his municipality, and any contracts involved would become null and void.

Besides Nutley, the member municipalities include Belleville, Bloomfield, Clifton, East Newark, East Rutherford, Garfield, Glen Ridge, Haledon, Harrison, Kearny, Lodi, Lyndhurst, Montclair, Newark, North Arlington, Orange, Passaic, Paterson, Prospect Park, Rutherford and Wallington.

Although the bills optimistically envision that the new board would take office the first Tuesday in May, it is highly unlikely that this date would be met. A political battle in trying to get the amendments through the Legislature could lie ahead.

Next Wednesday's meeting would have to demonstrate that enough of the member municipalities are behind the movement to give it a strong and unified initial push. The membership of Dennis P. Carey, Essex County Democratic chairman, and James J. McMahon, one of his top party aides, on the existing sewerage commission could produce potent political resistance to the change. Without the support of the Essex Democratic Assembly delegation, the bills would have little chance of passage.

Both Republican groups fighting for control of Essex County in the April primary election have planks in their platforms which call for abolition of the PVS in favor of a new board representing the member municipalities.

At a meeting last November with representatives of the may-

Fire Training

Another major innovation being considered is a training tower. At present, the firemen have been using such places as the Recreation Department's grounds and the Erie Railroad with the idea of fair, urging the Board to consider building a tower on railroad property. Hundredth estimated the possible cost of such a tower to be between three and four hundred dollars. Most municipalities have training towers.

Board Approves

400 and \$4,000 for teachers with a bachelor's degree, master's degree and one year beyond the masters, respectively. The maximum for these classifications are \$7,200, \$7,600 and \$8,000. In other business, the Board tabled a recommendation in a letter from Commissioner Nuncio to E. Pico, director of Public Affairs, regarding a recommendation to consider building a tower on railroad property. Hundredth estimated the possible cost of such a tower to be between three and four hundred dollars. Most municipalities have training towers.

WORLD'S FIRST MUSIC THEATRE IN THE ROUND RESTAURANT

Dailey's MEADOWBROOK DINNER THEATRE

CALA! PREMIERE: Tues., Apr. 21 (for three weeks only)

Guy's and Doll's

Music & Lyrics by Frank Loesser
Book by Jo Swearing & Abe Burrows

DINING THEATRE DANCING

- Broadway musical comedy hit
- Full course dinner
- Dancing to two orchestras

COMPLETE SHOW - ALL BROADWAY CAST

Dinner service from 6 p.m. • Dinner matinee Wed. & Sun. from 12:30 p.m.

Route 23, Cedar Grove, N. J. (2 miles so. of route 46)

SPECIAL GROUP RATES & PHONE RESERVATIONS: CLIFFORD 6-1455

live a little!
with a fabulous

'59 CHRYSLER

4-DOOR SEDAN

\$2999.00 only

INCLUDING: Automatic Torqueflite Transmission, Power Steering, Custom-Air Heater, Torsion-Air Ride, Turn Signals, and All Factory Standard Equipment. Many Colors to Choose From! BANK FINANCING • 36 MONTHS TO PAY.

(No Other Charges: This Is the Full Delivered Price)

Schifter Motors Inc.

89 Washington Avenue Nutley

Imperial Chrysler Plymouth

Over 20 Years of Service to the People of this Area

FIGHT CANCER

with a Checkup and a Check

THE NEW BANK
SUBURBAN, ILL.

American Cancer Society

Checkup and a Check

Space contributed by Public Service

The Stork Club

operation

Expand Your Home...



If you need that extra living space but have been delaying due to lack of funds — wait no longer — come to the Peoples National Bank & Trust Company for a loan.

You may borrow what you need now, then repay your loan in convenient monthly installments while you enjoy the added room. See your contractor for the cost, us for the financing. Bank borrowing is cheaper.

For Any Banking Need — Come to the Peoples National Bank & Trust Company FIRST.

3%
INTEREST
ON SAVINGS

PEOPLES NATIONAL BANK AND TRUST COMPANY

237 WASHINGTON AVENUE



*Parking for Customers
Adjacent the Bank Building*

BELLEVILLE,  NEW JERSEY

Member Federal Deposit Insurance Corporation

SPOTLIGHT ON SPORTS

By FRANK JONES

Local table tennis bugs may be interested to know that the New Jersey State Table Tennis Championships have been scheduled for Saturday and Sunday, May 2 and 3 at Bergen Mall in Paramus. Applications are now available for those interested. Several different divisions have been set up in order to be as fair as possible to players of varying skills and ages. For youngsters players there are events for boys under 15 and those under 18 and for girls under 13. Then there are mens' singles, womens' singles, mens' doubles and mens' novice singles. The last category excludes established stars in the sport in order to give the average players an opportunity to win a title. Ed Gutman, of 223 Burroughs Terrace, Union, or Len S. Rubin, of 681 Palmer Avenue, Maywood, may be contacted for further information.

That long-awaited time has come. The day that we reveal our annual prophecy of the outcome of the major league pennant races. So, with no further ado, here we go out on our yearly limb.

In The National League, we don't think Milwaukee has the stuff to take them to a third pennant in a row. On paper the Braves still may have the best outfit, but history has borne out that statistics do not make pennant winners. Our pick in the eastern circuit is the Pirates. The addition of Harvey Haddix and Smokey Burgess to the Bucco squad plugged two gaping holes in Danny Murtha's outfit, and should be enough to carry them from runner-up position into the top spot.

Going down the line, the hard-hitting Giants ought to manage a third-place finish behind the Braves. Next in order we see Cincinnati, St. Louis, Chicago, Los Angeles (Yep, seventh place for the Dodgers and Philadelphia. As far as individual performances go, it's a pretty safe bet that Willie Mays will take his second batting championship, and a less safe bet, but one we're willing to make, that Dick Groat will be recognized as the most valuable player.

We've got a shocker for American League fans. We predict that the Yankees will startle everyone by failing to win their fifth pennant in a row. Their successors? The Detroit Tigers. It's about time that the individual stars in the Detroit lineup began to shine in unison. Up until now we saw outstanding years for Al Kaline, Harvey Kuenn, Charley Maxwell, Billy Hoelt and Jim Lanning, but never all at once. This might be the year for a united Detroit drive which should take them all the way to the top. What about the Yanks? Sure, they still have the team that has reeled off four crowns in a row, but we just don't see them scoffing at the law of averages for a fifth year.

The rest of the loop will probably finish up something like this: Boston, Chicago, Cleveland, Baltimore, Kansas City and Washington. Mickey Vernon will have no trouble winning the batting crown, and Al Kaline stands a good chance of pulling down the MVP prize.



Commissioner George Kiernan is presented with the first American Legion Junior Baseball Booster Stickler by George Mitchell, Commander of Belleville Post No. 105. Others in photo are Arthur Sharrock, post adjutant, extreme left, and John Kay, junior baseball chairman and manager.

Social Security At Age 60 Is Urged By Rep. Rodino

In Speech Before Congress, 10th District Congressman Asks If Current Insurance Legislation Is Obsolete

Congressman Peter W. Rodino, Jr., in a speech before the House of Representatives urged Congress to make full social security insurance benefits available to both men and women at 60.

The 10th District Congressman, who introduced a bill earlier this year to advance the age from 65, called upon Congress to take a hard and realistic look at our social security legislation to determine whether it has not become obsolete in view of today's needs.

"Many workers," Congressman Rodino, said, "have been forced into retirement long before they reach 65. And the present social security age requirement makes no allowance for this problem."

From a survey prepared by the Social Security Administration, Rodino pointed out that only about 5 percent of the beneficiaries had retired voluntarily while in good health to enjoy their leisure. The rest had lost or quit their jobs for reasons largely beyond their control.

Rodino said "the problem of our senior citizens is a plight one and increased age is still accompanied by an insurmountable barrier of discrimination."

A Department of Labor survey disclosed, according to Rodino, that while workers of 45 years of age or over comprised 40 percent of the job seekers, they obtained only 22 percent of the jobs filled by employers.

"Look in the classified ads of our newspapers," said Rodino, "and you will find that age restrictions are listed openly by many employers. There is no need to make charity cases out of these people. Charity of this nature becomes expensive, demoralizing and unimpressive, and is a totally unsatisfactory solution to this problem."

"Certainly it makes more sense to allow these people to draw out their share of social security benefits to which they have contributed at a time when these benefits are needed most."

"There is no question in my mind that a measure lowering the retirement age to 60 would be a major step in developing a sensible and comprehensive social security program."

"What we have today is an aging, largely urban population, struggling to survive the dislocations and complexities resulting from a growing, expanding economy. If we are to save our older men and women from disease and despair, we must help them in this struggle."

GIRLS BOWLING CHAMPS LISTED AS SEASON ENDS

Lucky Strikers Top Teen League; Marion Smith, Carole Brand High-Average Bowlers

In the teenage girls bowling leagues, the "Lucky Strikers" consisting of Barbara Cafone, Elizabeth Peanaman, Terry Piscitelli, Barbara Sloan and Judy Smith, rolled into first place.

These girls bowled every Wednesday night at Branch Brook Lane.

In the married women's group, Marge Mathison was a double winner capturing the high total pins and the high game crown. Marion Smith swung in for high average, and Irene Post bowled the high three game series. The married women's leagues bowled every Friday night at Branch Brook Lane.

Recreation Bulletin

Today
3:30 p.m. — Jr. Barbell Club — Stadium
3:30 p.m. — Recreation Kiwanis Elementary School Girls Bowling Leagues — Branch Brook Lane
7:00 p.m. — Senior Barbell Club — Stadium
7:30 p.m. — Skorekeeper class — Recreation

Monday
9:15 a.m. — Preschool play program — Recreation House
9:30 p.m. — Junior Barbell Club — Stadium
7:00 p.m. — Senior Barbell Club — Stadium
7:00 p.m. — Girls Rifle Club — Stadium
7:30 p.m. — Girls fencing — Belleville High School
7:30 p.m. — Grammar school girls gym — Friendly House

Tuesday
9:15 a.m. — Preschool play program — Recreation House
3:30 p.m. — Junior Barbell Club — Stadium
7:00 p.m. — Senior Barbell Club — Stadium
7:00 p.m. — Boys Junior Rifle Club — Stadium

Wednesday
9:15 a.m. — Preschool play program — Recreation House
3:30 p.m. — Junior Barbell Club — Stadium
7:00 p.m. — Recreation Kiwanis Elementary School Bowling Leagues — Branch Brook Lane
7:00 p.m. — Coed fencing — Friendly House
7:30 p.m. — Senior Barbell Club — Stadium

Thursday
9:15 a.m. — Preschool play program — Recreation House
7:00 p.m. — Junior Barbell Club — Stadium

Bellboy Keglers Sneak By Montclair In Season's Final

Belleville Team Nips Montclair To Tie The Mounties For Second Place Behind League Champions, Bloomfield High School

Belleville High's keggers, coached by George Lees, nipped Montclair High 835-823 and 901-887, in the final match of the 1959 season.

This final victory gave the Bellboys a second place tie with the Mounties as each had 6-3 records as compared to league champion Bloomfield's 9-0 record for the year.

The Belleville team and coach now look forward to the league handicap tournament that will be held April 8, at The Towers, in Cedar Grove. The last two showings of the team have made Coach Lees quite happy and have also made the picture look very bright for the coming tourney on Wednesday.

In the win over Montclair, the Bellboys took the first game by a mere twelve pins as Richie Lowack, Bill Van Ness, Skippy Crutcher, and Joe Lang posted 184, 180, 177, and 164 respectively.

The second game of the match as the Belleville team lost its first 900 game of the season as they rolled 101 to take the very tight match. Lang led the team with a terrific 197 while Bob Alessi was right behind him with 190. Crutcher, Van Ness, and Lowack came through with 184, 170, and 160, to round out the Belleville scoring.

In other league action Bloomfield kept its record intact taking Wayne in a three game affair. The Bengals won the first game 828-717 while Bob Alessi was right behind him with 773-727 behind Bob Sanford's terrific 233 game to tie Verona and Seton Hall for fourth place.

Verona lost its chance for a second place tie as they were topped by Lovly St. Benedicts 779-742, 729-724, and 760-747. The Pony Pirates gained an easy win as North Arlington forfeited their match.

Lowack had the high average for the Belleville team with a 174 mark. This was also good enough for him to tie the top five in the league. Alessi, with 197 Crutcher, with 161 tang, 157 Van Ness, with 161 tang, 157 round out the final averages for the entire squad.

North Jersey Intercollegiate Bowling League Final Standings			
	W.	L.	Pct.
Bloomfield	9	0	1.000
Belleville	6	3	.667
Montclair	6	3	.667
Verona	5	4	.556
Seton Hall	5	4	.556
Caldwell	4	4	.500
St. Benedicts	3	6	.333
Nutley	3	6	.333
Wayne	3	6	.333
North Arlington	0	9	.000

\$3 min. station rate from Newark after 6 P.M. and all day Sunday. 10% tax not included.

Girls Rifle Club Reports Openings

Commissioner George F. Kitterman announced this week that there are a few openings in the Belleville Recreation Girls Rifle Club.

This Club shoots every Monday night at 7 p.m. at the Municipal Stadium, and is under the direction of Jack Boyd.

Any Belleville girl, 14 years and over is eligible to join this Club. This Club is a member of the National Rifle Association and follows the rules and regulations of the Association.

St. Mary's Mixed Team Out Of Running In Bowling Race

St. Mary's bowed out of the Essex County CVO Senior Mixed Bowling League race to all intents and purposes when the Nutley five lost three times to St. Casimir's of Newark.

St. Casimir's thus moved into first place and now the defending champions have a six-game edge on St. Mary's, which fell back to fifth. With only a month to go and five teams to climb over with position well coming up, it looks pretty hopeless for the Nutley keggers.

St. Casimir's really buried St. Mary's in the opening 811-659, but regressed after that but still won, 771-712 and 691-679. St. Tabasco, with 111-181, and Chuck Engel, with 190, made a vain attempt to pull at least one game out of the fire for St. Mary's.

Weekend Weather
Rain is predicted for the weekend with skies clearing by late Sunday. The temperature will be in the low 60's.

Lumber

Open Sunday From 9 A.M. Until 1 P.M.

BELLEVILLE

Building Materials Corp.

Easy To Reach and Park

LUMBER

* ROCK LATH * PLYWOOD

* SHEET ROCK * CEILING

* TILE * KNOTTY PINE

* MASONITE * SHELVING

* SHINGLES

* FLOORING * CEDAR

* LINING * MOLDING * INSULATION * DOORS

Sand Cement

Plymouth

9-5818

528 Joralemon St. Belleville

OPEN 8-5 MON. THRU SAT.



ADVERTISER AT WORK!

Whether it's to aid distraught mothers, busy retailers or manufacturers, advertising is ready with a helping hand. On the pages of this newspaper, right on through the classified, you'll see ads that are working hard to help advertisers sell their products or services.

Advertising helps by spreading the word throughout the length and breadth of the land. As more people are informed, more products are sold. The demand snowballs and causes greater production, resulting in constantly improved products at lower cost.

Nowhere else in the world is advertising used so effectively and extensively—and nowhere else is there such a high standard of living. Advertising helped to bring on this high standard of living. Thus, you are the one who benefits from advertising!



Advertising works for you!

5th Annual BAZAAR

Saturday Evening

April 4, at 7:30

125 Academy Street

(Behind the Library)

Belleville (213 Bus) Admission Free

Support of Congregation A.A.

CLASSIFIED SECTION

FLOOR WAXING

Rug Shampooing and Upholstery Cleaning

Janitorial Service

Call GR. 2-4580

Commercial - Industrial - Residential

Park Ridge Service Co.

Clifton Bloomfield

All Work Done By Owners

Phil LaMotta Bob Beringer

Est. 1945 - Bonded and Insured

Northern's FUEL KIDS

FUEL OIL FROM GOOD OLD MOTHER EARTH - THE KIND THAT HEATS FOR ALL IT'S WORTH!

MA EARTH

NORTHERN NEW JERSEY Oil Co.

WU-4-2422

Sales - Service

!LOOK!

\$99.50

\$99.50

A New 3 Wire 220 Volt Service - Line With Circuit Breakers Installed In Your One Family Home For — 99.50

Live Better Electrically And Save Yourself

Some Money. Call Us Now.

D-and-D ELECTRIC

39 Ralph Street

Belleville

Day Phone

PL 9-1860

Nite

PL 1-2782

Savings Insured up to \$10,000

A family with one child can have as much as \$70,000 of insured savings.

Dividends start every month here... and if you save today, you'll earn dividends starting from the first of this month! Open your account with \$1 or more; add as much as you please, whenever you please. This friendly community institution invites your account.

De Witt Savings

AND LOAN ASSOCIATION

463 Washington Ave., cor. Tappan Ave.

BELLEVILLE, N. J. • Plymouth 9-5264

Daily, 9 to 4; also, Monday Evenings, 6:30 to 8



SERVICES:

Savings Accounts • Money Orders

Travelers' Cheques • Gift Checks

Pass Book Loans • Mortgage Loans

Home Improvement Loans • Gas and Electric Bills Collected

The Belleville Times

RALPH E. HEINZEN, EDITOR AND PUBLISHER
ADVERTISING, NEWS AND BUSINESS OFFICE
328 WASHINGTON AVENUE
Francis Jones, News Editor

Prologue to Spring

The winter landscape hangs in balance now,
Transfixed by glare of blue from gorgon's eye;
The skaters freeze within a stone tableau.
Air alters into glass and the whole sky
Grows brittle as a tilted china bowl;
Hill and valley stiffen row on row.
Each fallen leaf is tramped by spell of steel,
Grimpled like fern in the quartz atmosphere;
Repose of sculpture holds the country still.
What countermagic can undo the snare
Which has stopped the season in its tracks
And suspended all that might occur?
Locked in crystal caskets are the lakes,
Yet as we wonder what can come of ice
Green-singing birds explode from all the rocks.

Sylvia Plath

The Route 21 Span

A public hearing will be held Wednesday at Town Hall on the proposed new highway linking the recently completed portions of Route 21 in Belleville and Newark. From what we can see, the State Highway Department has done a commendable job in general in routing the new link so as to cause a minimum of disruption. The engineers seem to have made the best possible use of the space available. However, there is one feature of the project of which we disapprove and which we think merits serious consideration on the part of the highway engineers.

We understand that no access to the northbound portion of the roadway is planned within Belleville. As a matter of fact, anyone coming from Belleville and seeking to go north on Route 21 will have to, according to present plans, travel a substantial distance south, past Verona Avenue in Newark, before they will be able to turn around and go back north. In our estimation, this is an inconvenience of a serious enough nature to warrant a thorough study on the part of the Highway Department of the possibility of providing access to the northbound highway either within Belleville, or close enough to avoid the necessity of such a round-about journey.

We understand that the Town will be represented at the public hearing and that this point will definitely be brought up. It is the hope here that an agreement satisfactory to all concerned can be worked out. F.J.J.

More "Tax Free" Housing In Newark

Preliminary plans for four more public housing projects in Newark, to cost an estimated \$9,871,283, have been approved in Washington by the Federal Housing and Home Finance Agency. One project, with 1,680 housing units, is to be the largest in Newark; three are major housing projects for the elderly.

No time should be lost in establishing whether or not these Federal projects are to be tax-free. We here in Belleville, as are the taxpayers in all the other Essex suburban towns, are directly concerned through our individual tax bills. Hitherto, such Federal housing projects have been tax-free which means that the city of Newark does not carry those millions of dollars of construction on its taxrolls as ratables.

Senator Donal Fox Predicts Passage Of Assessment Bills

As seven bills containing provisions for the first effective overhaul of New Jersey's property assessment structure began a slow trip through the Legislature, in Trenton, this week, Senator Donal C. Fox, one of the sponsors of the bi-partisan effort, predicted, in an exclusive interview with The Nutley Sun, yesterday, that the package of bills will be voted before the Assembly and Senate recess next Summer.

The key bill in the revision package calls for the enactment of a compulsory assessment ratio of 50 per cent of "true value" in all the \$40 million in properties throughout New Jersey.

"I am hopeful that, for the first time in a century, New Jersey will have an efficient assessment structure and that there will be no more deviation from a legal standard," Senator Fox said. "If these seven bills are adopted, it will consecrate a truly bi-partisan effort in which I have

been able to find excellent support from Republican Senators Wayne Dumont (Warren) and Robert C. Crane (Union) while in the Assembly, men like Elmer Matthews (Essex), a Democrat and a legal tax analyst by profession, and Alfred Beaudette (Monmouth), Republican minority leader, have shed the traditional party strictures to solve a big problem."

Assemblyman Matthews is the

Carrying the tax franchise one step farther, Newark gets an exemption of county taxes for that Federal housing and that is one of the contributing causes for Belleville's increased county tax bill for 1959 — minus a little chickenfeed.

That Newark should waive its municipal taxes on this new housing is between Newark and the Federal agency. That Newark should expect the Board of Freeholders to waive county taxes on that Federal housing concerns us all and is debatable. We contend that the issue should be carried into the courts if necessary.

The 1,680-unit housing project in West Kinsey Street will involve the demolition of existing housing in six square blocks. The millions of dollars of ratables in that housing to be demolished will come off the Newark taxrolls, hence off the total of appraised value of taxable property upon which each Essex municipality's share of county taxes is based. Newark's share of county taxes will be decreased; our share will rise proportionately.

The resistance of the 21 suburban municipalities must be organized. Newark, which has enjoyed a welcome county tax relief for several years past on new "tax-free" Federal housing, now pays for less than its share of county costs although Newark's demand on the county's hospital, penitentiary and other services far exceeds that of all the Essex suburban towns combined.

Nothing will be gained by waiting. Newark will not take the initiative to pay its full but just share of county taxes. That obligation must be imposed on Newark. R.E.H.

Leading A Horse To Water

Instead of lessening, the tension within the Republican Party in Essex County grows worse with each hour's approach to the Primary Election and the tragic hint of an irreparable split comes closer to reality.

For the good of the party, so that it may rise again from the ashes of its defeat last November, the whole shebang, Clapp faction and Webb faction, should be scuttled.

Bad timing marred this week's widening of the GOP scission. Instead of waiting for the reorganization of the 22 municipal committees, immediately after the Primary Election, the Clapp wing came out flatly for the election to the county chairmanship of former Congressman Robert W. Kean. The Webb wing, naturally, resents the tactics.

Kean is a good man with a fine, long record in Congress. His decision, last year, to quit Congress where his re-election was a certainty and run for the U. S. Senate does not speak well for his political judgment. He was roundly beaten by Democrat Harrison Williams, as any "political teenager" could have foreseen.

It is our contention that the designation of a county chairman should await the formation of the municipal committees. Any effort to force at this time the candidacy of any potential chairman can only be a disservice to him and can only widen the cleavage between the two factions when the Primary is all over.

It is not smart politics to prolong the split in the party. Yet this attempt to install Kean now in Yeoman's succession as county chairman can only prolong the split. The Clapp wing may have enough strength to install Kean as chairman, but they cannot force other Republicans to accept or to approve him.

You can lead any horse to water, but you cannot make him drink — and that goes for the electorate's reaction to a county chairman imposed by force with no respect for democratic tradition. R.E.H.

author of one of the package bills which would provide a homestead exemption of \$2,000 for all property owners living in their own homes. Such an assessment exemption would be on a local option-referendum basis.

Some Fox said that Matthews may consent to an amendment to change the exemption to either 20 or 30 per cent of true value, "whichever is less," to prevent any mass exemption for tax purposes of low-value property.

Fox said that another bill in the package will increase the present \$500 exemption for war veterans to \$800, to correspond to the increase in the assessment ratio of 50 per cent. The immediate elimination of household personal tax is provided by another of the even bills.

Senator Fox said that the Hudson County delegations in both houses are preparing to fight the package but despite that opposition, the Essex Senator told The Sun he expects the passage of the amended bills in both houses.

Sit-Down Bath

A sit-down bathtub was available to Americans around 1850. The New York City Antique Fair, to be held April 13-18 at the 34th and Park Avenue Armory reports the bathtub was made of sheet iron and was used for hip, foot and sponge baths.

One Man's Opinion

West Germany, Sorely Split Politically, Is Not Ready For Free Elections On Reunification — Even If Moscow Agreed

By Ralph Eric Heinzen

Whatever does come out of the summit meeting now definitely in the offing, it will not be a unified Germany in free elections throughout both halves of Germany to determine what the German people themselves want. At best it will be a consecration of a divided Germany with one debatable point: whether we, the British and the French stay in West Berlin with a guaranteed corridor or whether we must pull up stakes and allow Berlin to become a red isle in a Communist sea.

It is an unhappy fact that even West Germany would not be ready for a free election. There is no common policy of the Adenauer Government, the Social Democratic Party and the Free Democratic Party with which to face the big powers at their "summit" session. In fact there is only disunity in West Germany, politically, and there has been no effort to discuss future German reunification with East Germany.

In East Germany it is a different story. They had a recent "election" upon which they now base their "government." Voters were allowed to hear only Communist orators. They went to the polls under the eyes of the Communist police. They stamped a ballot listing the candidates of only one party — the Communist ticket.

Thus in what was a 99.9 per cent Communist "vote" hardly 2 per cent of the voters were truly Communists. An election held under those conditions would be only a travesty on Democracy, but Khrushchev refuses even to agree to such an all-German election on the issue of reunification.

West Germans Decided

An effort was made over the Easter weekend, in West Germany, to arrive at an agreement between the German parties on a common program, as a prelude to four-power action. The attempt was not successful in establishing a common policy but there were certain basic conditions which were agreed:

1. Recognition of equal rights for all of Germany must be granted by Moscow to East Germany until there has been an understanding between East and West Germany.
2. No step should be taken toward bringing both parts of Germany together until agreement has been reached on the next step ahead.
3. No disengagement plan involving the withdrawal of American, French and British troops from West Berlin should be applied before binding agreements on disarmament and reunification have been reached with the Kremlin.
4. Controlled free elections for all of Germany must coincide with the election of a German-wide national assembly which will be charged with approving a Constitution for all of Germany.

The Bonn government would like to see, as first steps toward reunification, close, technical contacts with East German authorities.

Such contacts would include reducing traffic restrictions at zonal borders, and removing the ban on the exchange of newspapers and other publications between both parts. These demands hitherto have been refused by the East German Government.

What Khrushchev Seeks

What is Khrushchev's game, what does he hope to achieve with his demands that the Allied occupation of West Berlin be ended? How far will he go down the dangerous road of bluff?

We can understand something of the Khrushchev attitude if we will note that, for several years past, two or three different policies toward the West have had their advocates in Moscow's presidium.

On the one hand there was the stand-pat policy of the "old Bolshevik," Vyacheslav Molotov. His adherents argued in effect: "Don't change foreign policy by an inch or an ell. Don't try new ventures. Don't make concessions either. Move one brick, one stone from the Stalinist edifice and the whole wall will come tumbling down."

Obviously this policy was getting nowhere in a time of change and Molotov lost out and was shunted to the steps.

Another policy advocated a mild flirtation of friendship and cooperation with the West. This did not have many adherents but Marshal Zhukov was prepared to give it a try. He came to realize in the Kremlin power struggle.

Finally there is the present policy of boldness, new ventures and showdown. This has the imprimatur of Nikita Khrushchev. He has pushed Soviet interests in the Middle East to the point of alienating President Nasser of the United Arab Republic.

Now he wants to make permanent the present "status quo" in Eastern Europe and to wipe out that Western enclave in East Germany.

Just as Molotov and the other exponents of older policies have been shunted aside and their main espousers silenced, Khrushchev

LETTERS

To The Editor

To the Editor of the Times-News: May I express our sincere appreciation for the splendid operation extended by the Belleville Times-News to our highly successful Crusade for Progress.

Those working for a better Belleville can take pride in the fact that our residents have generously supported building and improvement programs for practically every place of worship in town during the past few years.

Many families have recently moved to Belleville from out of state. We extend a warm and cordial invitation to all who are seeking a church home, to share with us the communion and fellowship of "Friendly Wesley the Family Church."

George E. Stickle,
General Chairman
Crusade for Progress
Wesley Methodist Church

Dairy Tales

OF COURSE OUR CHOICE IS MILK FROM BELLEVILLE FARMS



When you want the best milk, specify Belleville Farms. Every can is taken from the selection of our cows to the feed to the handling. It's good milk.

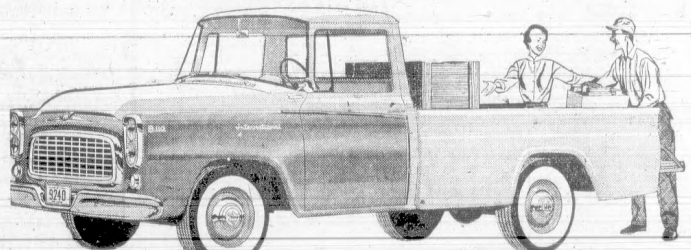
EAST NUTLEY GARAGE
C. A. PANELL, Prop.
Body and Fender Repairing
Expert Auto Regulating
Phone Nutley 2-686
10 Washington Avenue, Nutley, N. J.

Belleville Farms
"Quality Dairy Products Since 1911"
PL. 2-100 2-101
BELLEVILLE, N. J.

You'll like

NEW INTERNATIONAL TRUCKS

1. FOR THE MONEY. You get down-to-earth operating economy with a choice of 5 short-stroke, low rpm, six-cylinder engines built for truck work alone.
2. FOR THE SHOW. New dual headlights and anodized aluminum grille mean lasting good looks. Luxurious cab has more glass area, more passenger room. Long-lasting vinyl upholstery stays smart.
3. TO LOAD-UP. New Bonus-Load body (7'- or 8 1/2'-ft. long) is flush to cab to give you every inch of loadspace possible. Center-controlled tailgate assures easier load handling. Durable, smooth all-steel floor.
4. TO "GO". You get step-ahead power from a choice of 3 new optional V-8 engines that bring new economy to V-8 operation. They offer astonishing mileage from regular gas, plus low oil consumption.



There's an International Truck for every job!



Pickup with back seat New Travelall. More loadspace than any "wagon," more head and "torque" room for 4.

New Travelall. More loadspace than any "wagon," more head and "torque" room for 4.

New mid-range models. Offered with choice of 42 or 44 d.c. drive or platform body.

New compact design models. Short length for easier handling of long load, bigger pickup.

INTERNATIONAL TRUCKS

WORLD'S MOST COMPLETE LINE

A & F AUTOMOTIVE CO.

55 WASHINGTON AVE.

NU 2-0420

NUTLEY, N. J.

The number of cases of paralytic polio in the United States was 24 per cent higher for 1958 than in 1957 — apparently because apathy is keeping many people from getting their Salk injections. "Vaccinations were distressingly few during 1958," Health Information Foundation declares.

Despite sharp drops in the incidence of polio since the development of the Salk vaccine, many persons in the most susceptible age groups remain unprotected, only 45 per cent of the preschool

children in this country, and only 30 per cent of the adults 20-39 years old, have been fully vaccinated, according to Health Information Foundation.

"Americans are still willing to take business risks. Thousands of new businesses are started every year; others are expanded. But as the risks grow bigger, and the rewards shrink, we face the danger that investment and enterprise will dwindle, along with the growth and job-making ability of our economic system."

WONDERLAWN

Early Bird Specials!

YOU GET **FREE!**

WONDERLAWN LAWN FOOD
2500 sq. ft. size—25 lbs., Reg. \$2.50

WHEN YOU BUY **WONDERLAWN LAWN SEED**
2500 sq. ft. size only \$5.95

FEED YOUR LAWN AT OUR EXPENSE!

Get an early bird! Buy your lawn seed now—and get the 25 lb., \$2.50 bag of lawn food ABSOLUTELY FREE with each package of Wonderlawn! At \$5.95! That's an \$8.45 value for only \$5.95. Wonderlawn Lawn Seed gives you a lawn of permanent beauty. Wonderlawn Lawn Food "constant feeder" keeps grass green, keeps grass green. Quantity limited! Act now!

Award-Winning WONDERLAWN UTILITY LAWN SEED

SAVE \$1.00
Reg. \$4.95 Pay only \$3.95
(No free lawn food with utility offer)

at leading garden supply, seed and hardware stores

WONDERLAWN
For Lawns of PERMANENT BEAUTY
GARYLE WILLIAMSON, INC. 1072 WEST SIDE AVENUE, JERSEY CITY 6, N. J.
Quality Seedsmen Since 1916

